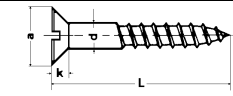
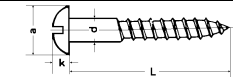


**Wood screw countersunk (flat) head
DIN 97 A4**



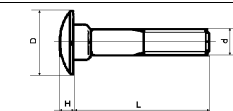
Art.no.	Dimension
360210	4x25
360220	4x30
360230	4x35
360239	4x50
360240	5x25
360250	5x30
360260	5x35
360270	5x40
360280	5x45
360290	5x50
360330	5x60
360340	5x70
360300	6x40
360310	6x50
360320	6x60
360350	6x70
360360	6x80
360370	8x80

**Wood screw raised (oval) head
DIN 96 A4**



Art.no.	Dimension
360010	4x16
360020	4x20
360030	4x25
360040	4x30
360050	5x30
360060	5x35
360070	5x40
360080	5x45
360090	5x50
360100	6x40
360110	6x50
360120	6x60

**Cup square neck bolt incl. hexagon
DIN 603 A4**

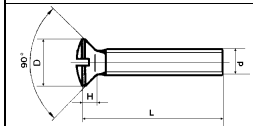


Art.no.	Dimension
309010	6x25
309020	6x30
309030	6x35
309040	6x40
309050	6x50
309060	6x60
309070	6x70
309080	6x120
309100	8x25
309110	8x30
309120	8x35
309130	8x40
309140	8x50
309150	8x60
309160	8x70

Continuation DIN 603

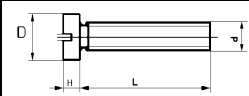
Art.no.	Dimension
309170	8x80
309180	8x100
309190	10x25
309200	10x30
309210	10x35
309220	10x40
309230	10x50
309240	10x60
309250	10x70
309260	10x80
309270	10x100
309280	10x120

**Raised coner-sunk (oval) head screw
DIN 964 A4**



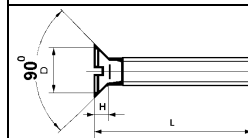
Art.no.	Dimension
302010	3x8
302020	3x10
302030	3x12
302040	3x16
302050	3x20
302060	3x25
302070	4x8
302080	4x10
302090	4x12
302100	4x16
302110	4x20
302120	4x25
302130	4x30
302150	4x40
302160	4x50
302170	5x10
302180	5x12
302190	5x16
302200	5x20
302210	5x25
302220	5x30
302230	5x35
302240	5x40
302250	5x50
302260	6x12
302270	6x16
302280	6x20
302290	6x25
302300	6x30
302310	6x35
302320	6x40
302330	6x50
302340	6x60
302350	6x70
302360	6x80
302370	6x100
302380	8x16
302390	8x20
302400	8x25
302410	8x30
302420	8x35
302430	8x40
302440	8x50
302450	8x60
302460	8x70
302470	8x80
302480	8x100
302540	10x50

**Cheese head screw
DIN 84 A4**



Art.no.	Dimension
304010	3x6
304020	3x8
304030	3x10
304040	3x12
304050	3x16
304060	3x20
304070	3x25
304080	3x30
304090	3x40
304100	4x6
304110	4x8
304120	4x10
304130	4x12
304140	4x16
304150	4x20
304160	4x25
304170	4x30
304180	4x35
304190	4x40
304196	4x45
304200	5x6
304210	5x8
304220	5x10
304230	5x12
304240	5x16
304250	5x20
304260	5x25
304270	5x30
304280	5x35
304290	5x40
304300	5x50
304610	5x80
304620	5x100
304310	6x10
304320	6x12
304330	6x16
304340	6x20
304350	6x25
304360	6x30
304370	6x35
304380	6x40
304390	6x50
304400	6x60
304410	6x80
304420	8x12
304430	8x16
304440	8x20
304450	8x25
304460	8x30
304470	8x35
304480	8x40
304490	8x50
304500	8x60
304510	8x80
304520	8x70
304530	10x25
304540	10x30
304550	10x35
304560	10x40
304570	10x50
304580	4x80

**Countersunk (flat) head screw
DIN 963 A4**



Art.no.	Dimension
303020	3x8
303030	3x10
303040	3x12
303050	3x16
303060	3x20
303070	3x25
303000	3x30
303090	4x8
303100	4x10
303110	4x12
303120	4x16
303130	4x20
303140	4x25
303150	4x30
303160	4x35
303170	4x40
303630	4x50
303180	5x8
303190	5x10
303200	5x12
303210	5x16
303220	5x20
303230	5x25
303240	5x30
303250	5x35
303260	5x40
303270	5x50
303280	5x60
303290	5x70
303300	5x80
303670	5x100
303320	6x12
303330	6x16
303340	6x20
303350	6x25
303360	6x30
303370	6x35
303380	6x40
303390	6x50
303400	6x60
303420	6x80
303440	6x100
303460	8x16
303470	8x20
303480	8x25
303490	8x30
303510	8x40
303520	8x50
303550	8x80
303560	8x100
303590	10x30